

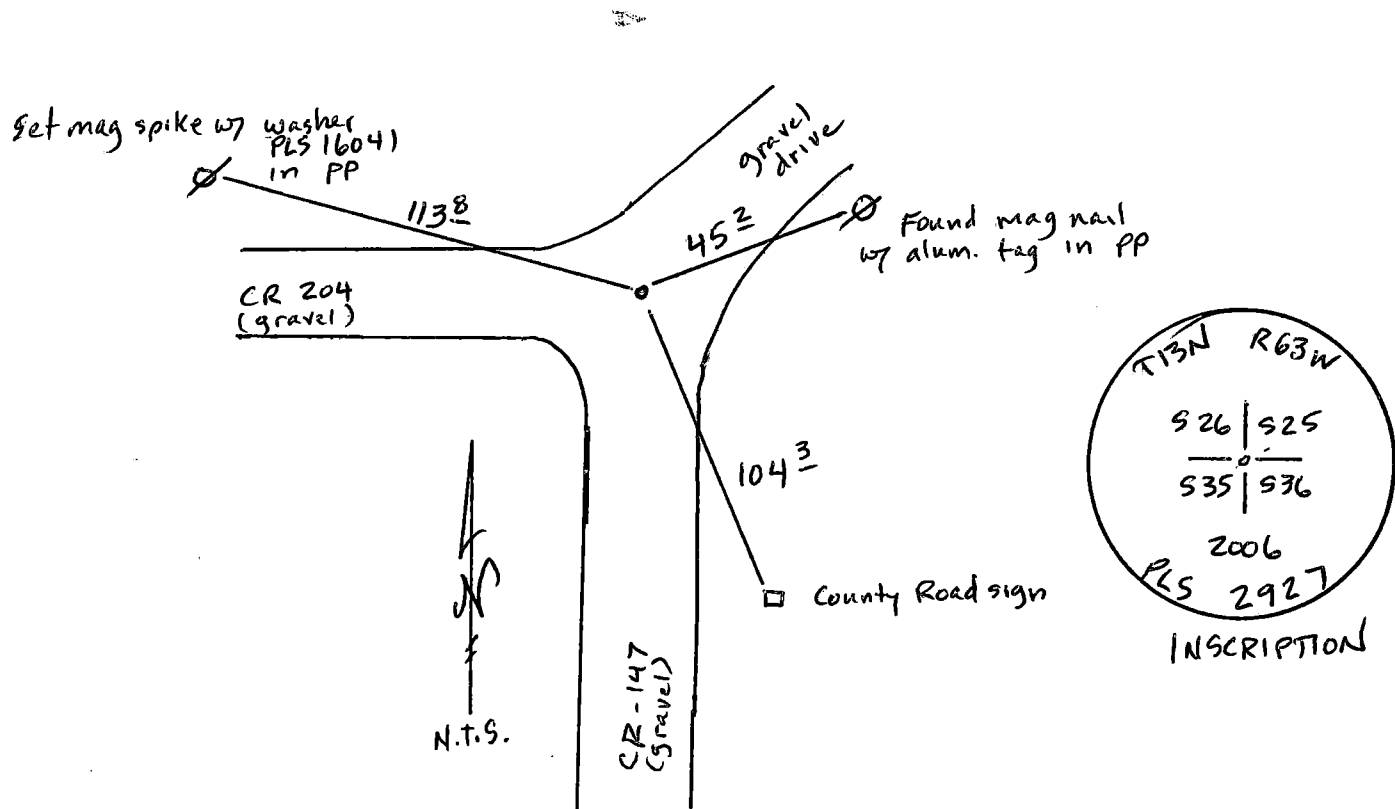
# State of Wyoming Corner Record

(In compliance with the *CORNER PERPETUATION AND FILING ACT*, Wyoming Statutes, 1997, Section 33-29-140, et seq., and the Rules and Regulations of the Board of Registration for Professional Engineers and Professional Land Surveyors)

Reverse side of this form may be used if more space is needed.

Record of original survey and citation of source of historical information (if corner is lost or obliterated). Description of corner monumentation evidence found and/or monument and accessories established to perpetuate the location of this corner. Sketch of relative location of monument, accessories, and reference points with course and distance to adjacent corner(s) (if determined in this survey). Method and rationale for reestablishment of lost or obliterated corner.

Found 2 1/2" Aluminum Cap dated 2006 by PLS 2927



Date of Field Work: 6-8-18

Office Reference: #61499

### CROSS INDEX DIAGRAM

A	1	2	3	4	5	6	7	8	9	10	11	12	13	14	15	16	17	18	19	20	21	22	23	24	25	A
B																										B
C		6																								C
D			5																							D
E				4																						E
F					3																					F
G						2																				G
H							1																			H
J																										J
K																										K
L																										L
M																										M
N																										N
O																										O
P																										P
Q																										Q
R																										R
S																										S
T																										T
U																										U
V																										V
W																										W
X																										X
Y																										Y
Z																										Z
	1	2	3	4	5	6	7	8	9	10	11	12	13	14	15	16	17	18	19	20	21	22	23	24	25	

Land Surveyor / Firm / Address

Paul E DeGraff

Encompass Energy Services

350 Interlocken Pkwy #350

Broomfield, CO 80021

Telephone: (303) 955-6080

This corner record was prepared by me or under my direction and supervision.

SEAL & SIGNATURE



Corner Name: NW Sec 36  
SBRPEPLS/PLSW: March 1994; PLSW January 1998

Section: 36 T 13N R 63W; 6<sup>th</sup> P.M. Cross-Index No.: 21Y



RECP #: 738307  
RECORDED 9/5/2018 AT 12:56 PM BK# 2595 PG# 746  
Debra K. Lee, CLERK OF LARAMIE COUNTY, WY PAGE 1 OF 1